



# Community Supervision in Texas

## Summary Statistics

*January 2003*

Texas Department of Criminal Justice  
Community Justice Assistance Division  
Bonita White, Division Director

Prepared by Research and Evaluation



# Community Supervision in Texas

## Summary Statistics

*January 2003*

**Updated and revised by Jen Todhunter**

Texas Department of Criminal Justice  
Community Justice Assistance Division  
P.O. Box 12427 Capitol Station  
Austin, Texas 78711  
(512) 305-9300 (Phone)  
(512) 305-9368 (Fax)  
<http://www.tdcj.state.tx.us>

# Table of Contents

---

	Page
Definitions . . . . .	3
National Perspective . . . . .	4
Statewide Population . . . . .	5
Race/Ethnicity . . . . .	15
Largest CSCDs . . . . .	18
Residential Populations . . . . .	25
Community Supervision Officers . . . . .	29
Community Supervision Caseloads . . . . .	30
CSCD Populations . . . . .	Appendix

# Definition of Terms

---

**Adjudicated Community Supervision.** The release of a convicted defendant by the court under conditions imposed by the court for a specified period during which the imposition of the sentence is suspended.

**Community Corrections Facility (CCF).** A closely monitored residential setting that frequently includes treatment for a specific problem area for the offender. CCFs encompass a variety of residential programs such as restitution centers and substance abuse treatment facilities. CCFs are administered by community supervision and corrections departments.

**Community Supervision and Corrections Department (CSCD).** Formerly known as adult probation departments, CSCDs employ community supervision officers (CSOs) to provide supervision for adult offenders placed on pretrial supervision, community supervision (probation), or deferred adjudication.

**Deferred Adjudication.** A form of community supervision that, if completed successfully, will prevent a final conviction from appearing on the offender's record.

**Direct Supervision** pertains to offenders receiving a minimum of one face-to-face contact every three months.

**Indirect Supervision** pertains to offenders transferred to another state, CSCD, or county; those who report by mail; absconders; and offenders incarcerated in jail, prison, or state jail (offenders having a term of community supervision to complete upon release from incarceration). The indirect population also includes offenders who are residing in substance abuse felony punishment facilities (SAFPF) that are not directly supervised by their local community supervision officer.

**Intrastate Transfers.** A category of indirect supervision whereby offenders transfer to another county or CSCD.

**Motion to Revoke (MTR).** When an offender does not adhere to the conditions of his/her community supervision and/or commits another crime, he/she is brought before a judge on a motion to revoke community supervision.

**Pretrial Supervision** pertains to individuals receiving court-approved pretrial supervision or pretrial diversion services. Pretrial supervision applies to defendants receiving supervision prior to trial. Pretrial diversion is defined as deferred prosecution whereby charges will be dismissed or an equivalent, if the individual successfully completes the conditions of a diversion program.

**Revocation** is the removal of an offender from community supervision and the imposition of a jail or prison sentence.

# National Perspective ---

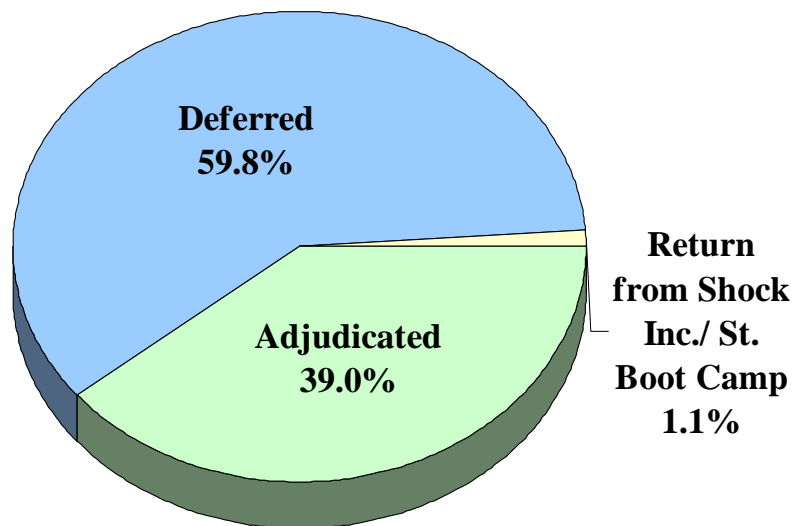
- A large percentage of Texas' adult population is under correctional supervision.
  - In 2001, the crime rate in Texas was 24% higher than the national average while the incarceration rate was 51% higher than the national average.
  - In 2001, Texas had the largest number of prison inmates (162,070) and the third highest incarceration rate (711 per 100,000 state residents) in the nation.
  - In 2001, Texas had the largest probation population in the nation (443,684) and the second largest parole population (107,688) in the nation. This combined community supervision (probation & parole) rate per 100,000 population tied with the state of Washington for the nation's highest.
  - Texas' probation rate is 2,873 per 100,000 adult population (sixth in the nation). Stated another way, almost 3% of the adult population in Texas is on probation.



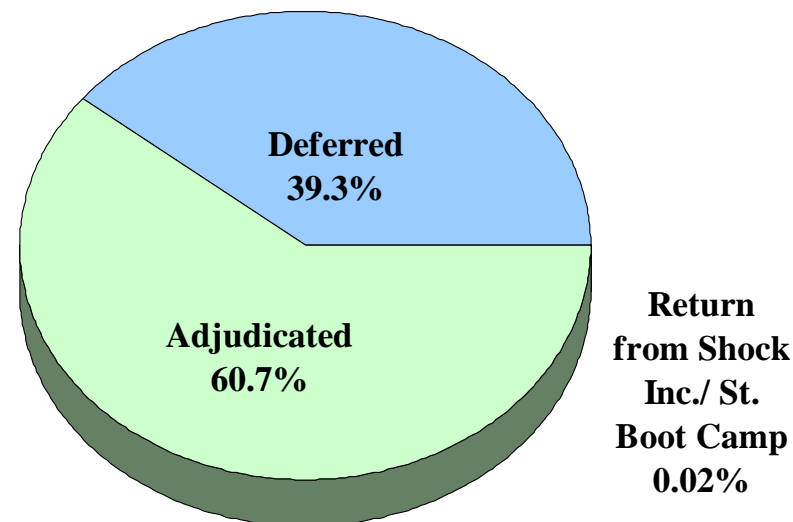
# Statewide Population: FY 2002 Community Supervision Placements

---

**Felons**  
(50,642 Total Placements)



**Misdemeanants**  
(125,167 Total Placements)

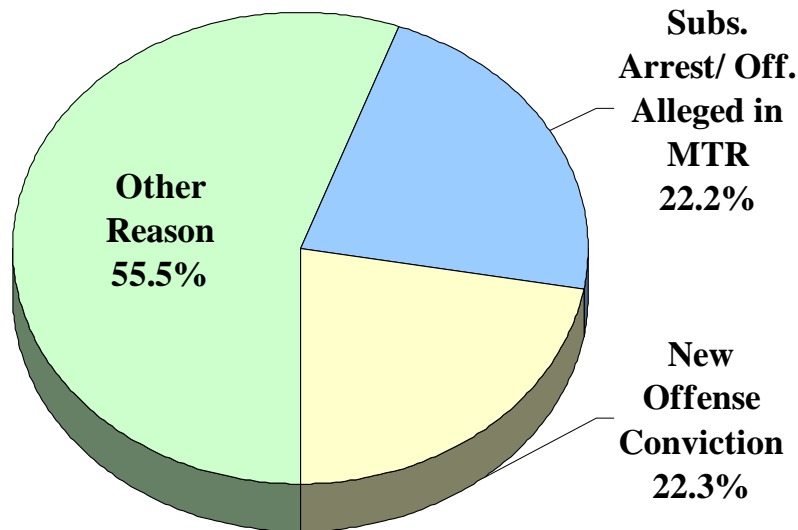


- The majority of felons initially placed on community supervision are placed on deferred adjudication while the majority of misdemeanants are initially placed on adjudicated community supervision.

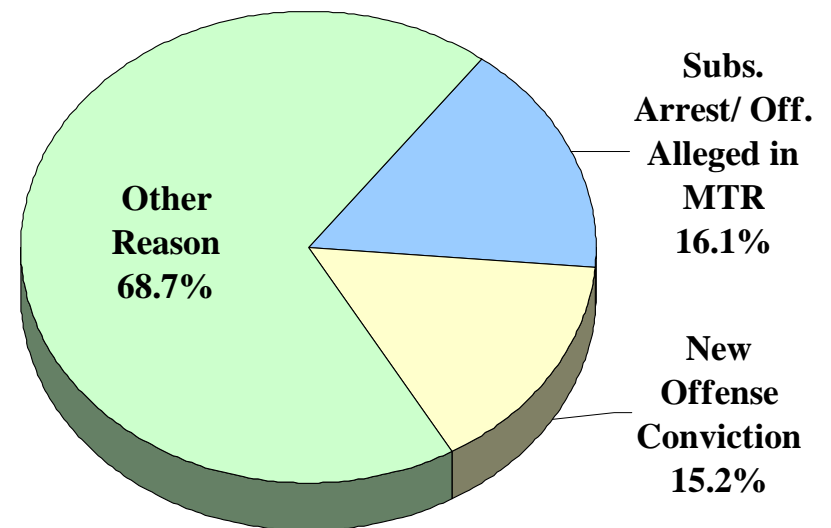
# Statewide Population: FY 2002 Community Supervision Revocations

---

**Felons**  
(22,875 Total Revocations)



**Misdemeanants**  
(25,674 Total Revocations)



## Statewide Population:

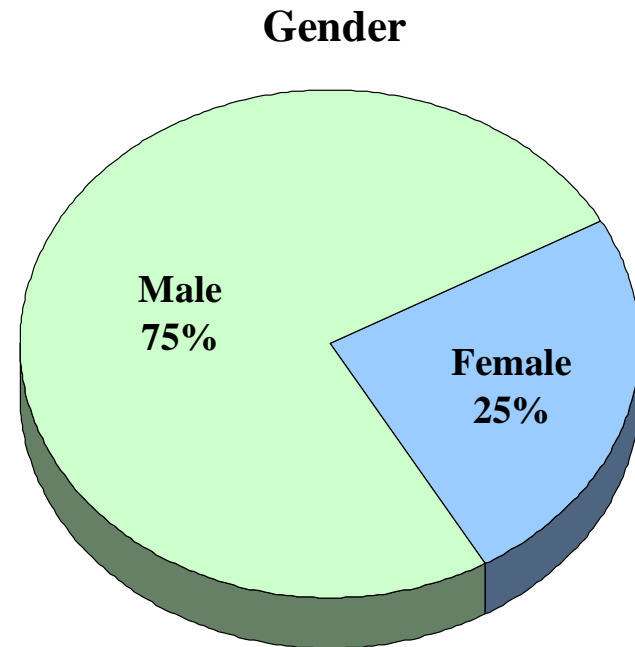
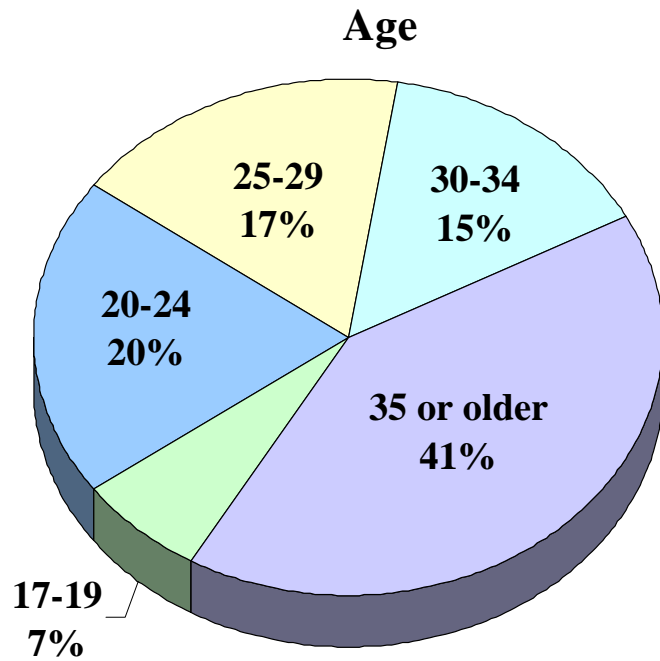
# FY 2002 Community Supervision Revocations

---

- CSCDs classify revocations based on reason(s) listed on the Motion to Revoke. However, it is not uncommon for the prosecution to drop charges for a new offense when the court revokes the offender.
- The most common reason for revoking both felons and misdemeanants is a violation of the terms of community supervision, (e.g., failure to report, failure to pay fines/fees, drug or alcohol usage, failure to participate in court-ordered programs, etc.).
- In FY 2002 the number of revocations due to the conviction of a new offense was roughly equal to the number of revocations due to an arrest with no conviction.

# Statewide Population: Direct Community Supervision Population as of August 31, 2000

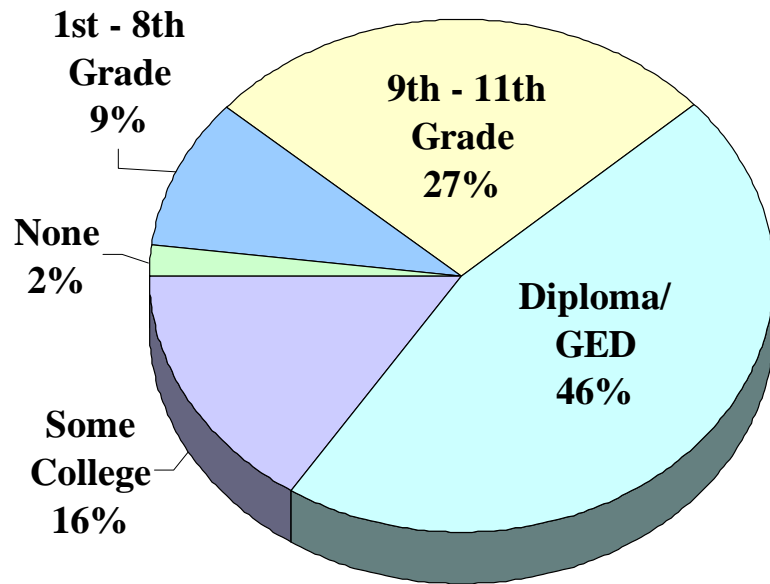
---



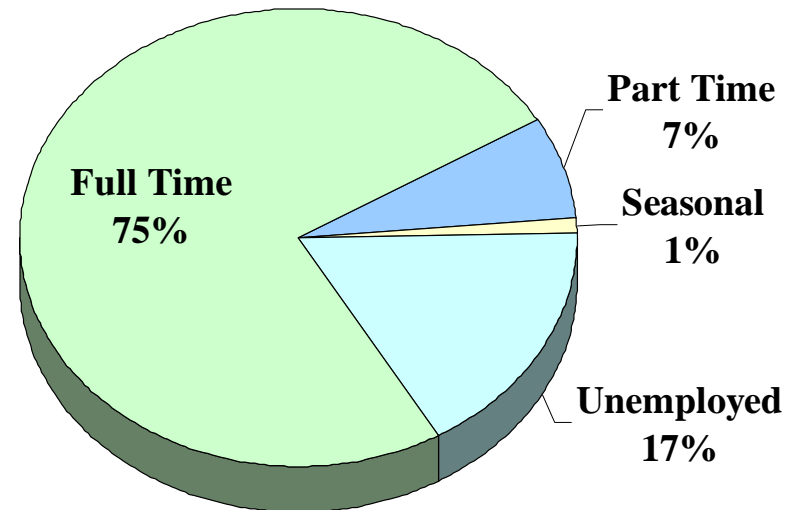
# Statewide Population: Direct Community Supervision Population as of August 31, 2000

---

**Education**

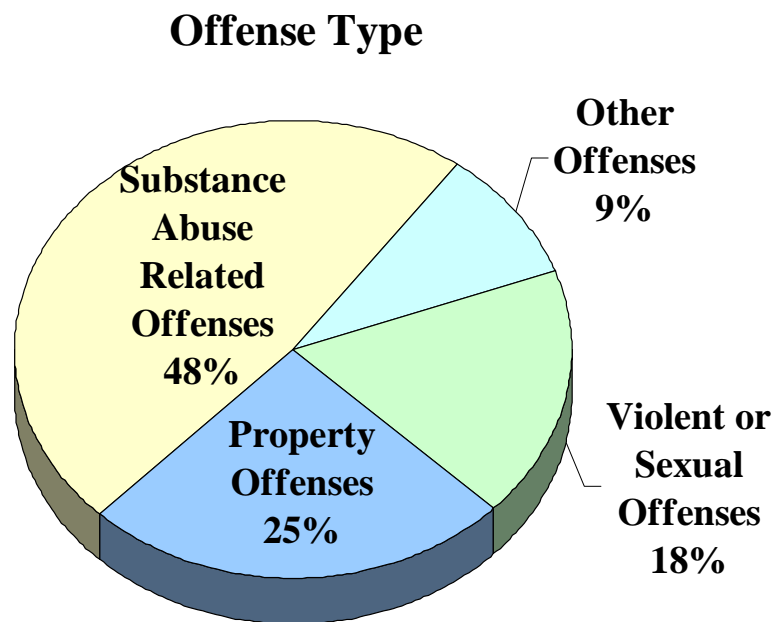


**Employment**



# Statewide Population: Direct Community Supervision Population as of August 31, 2000

---

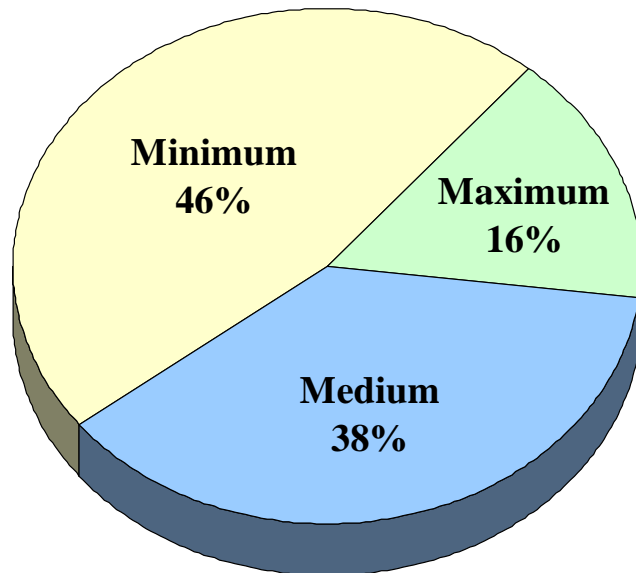


- Almost half of all offenders under community supervision have a substance abuse related offense.
- The most common offense category for felons is controlled substance. 32% of felons have an offense in this category.
- The most common offense category for misdemeanants is DWI/DUI. 47% of misdemeanants have an offense in this category.

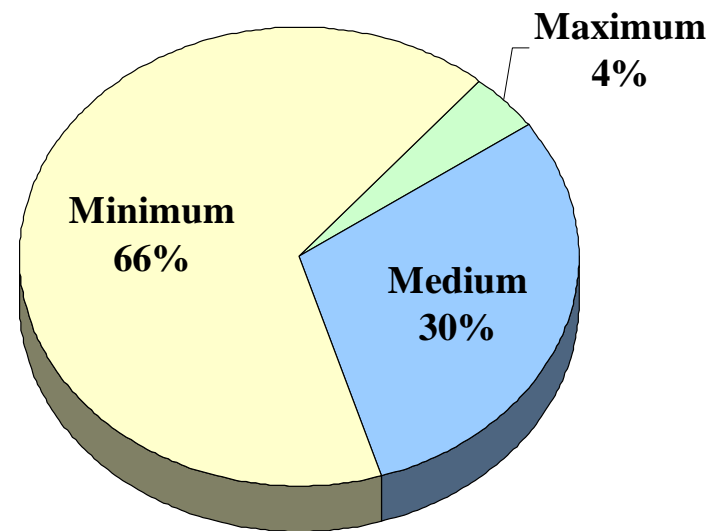
# Statewide Population: Direct Community Supervision Population as of August 31, 2000

---

**Risk Levels**

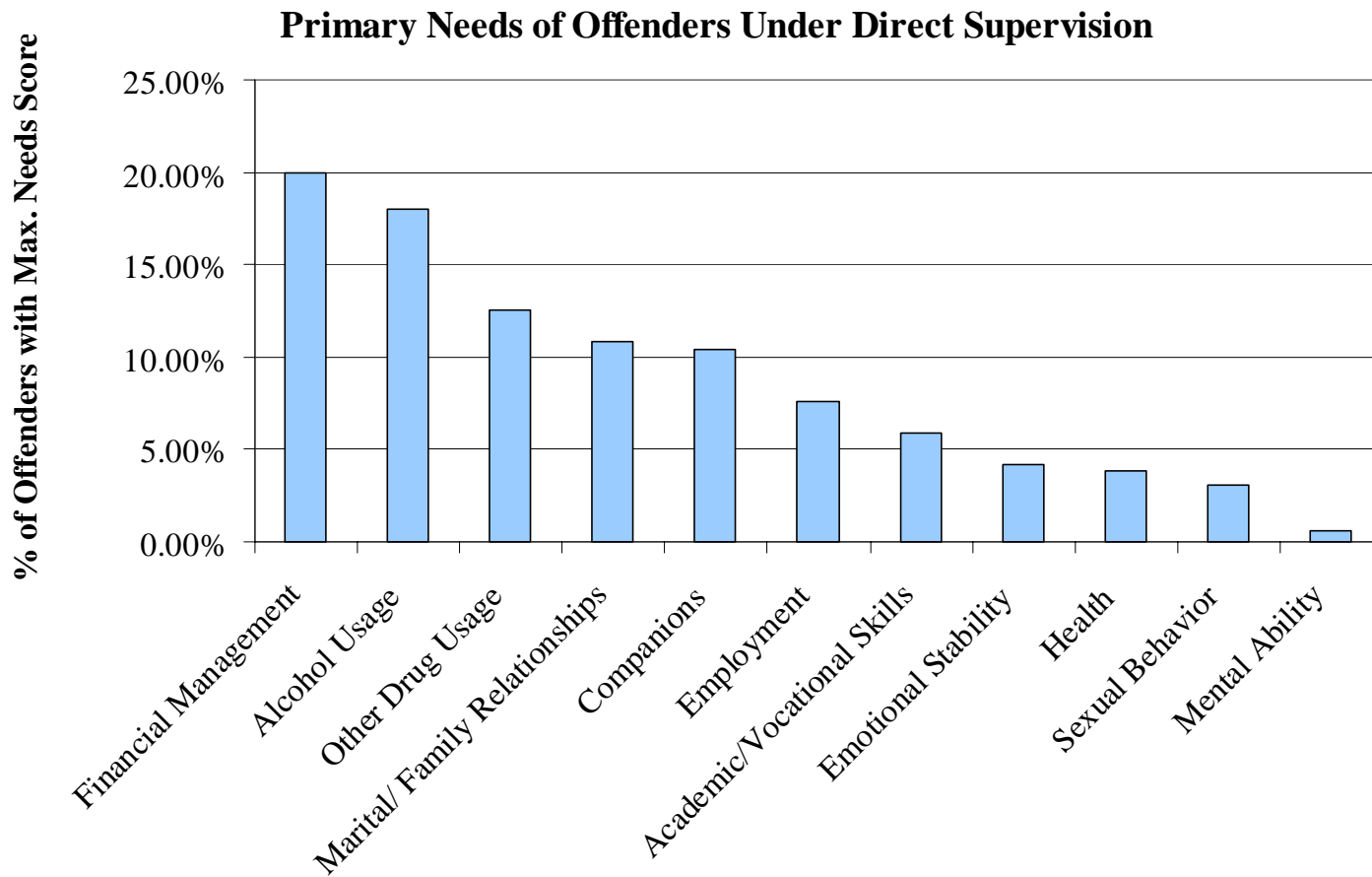


**Needs Levels**



# Statewide Population: Direct Community Supervision Population as of August 31, 2000

---

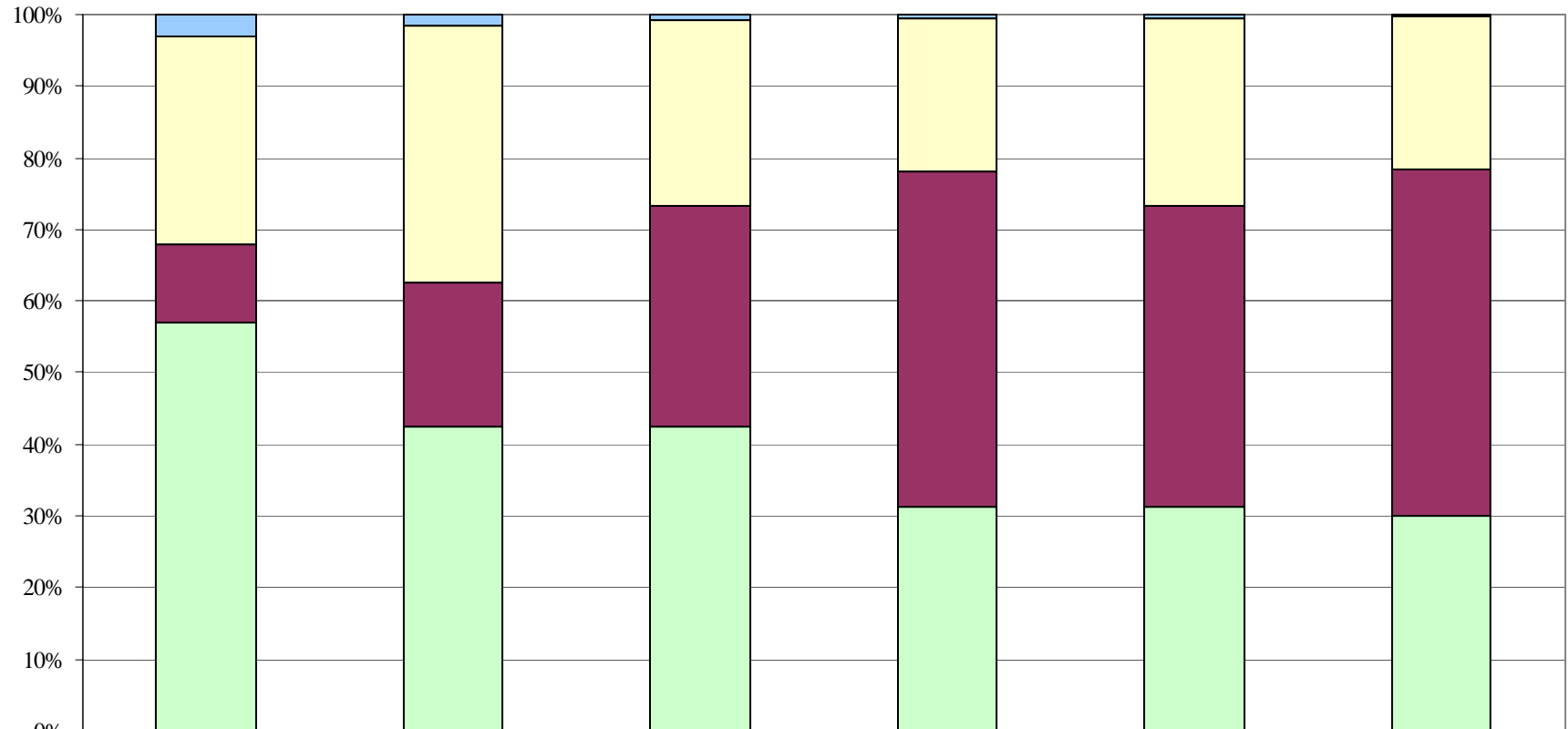


# Statewide Population: Direct Community Supervision Population as of August 31, 2000

---

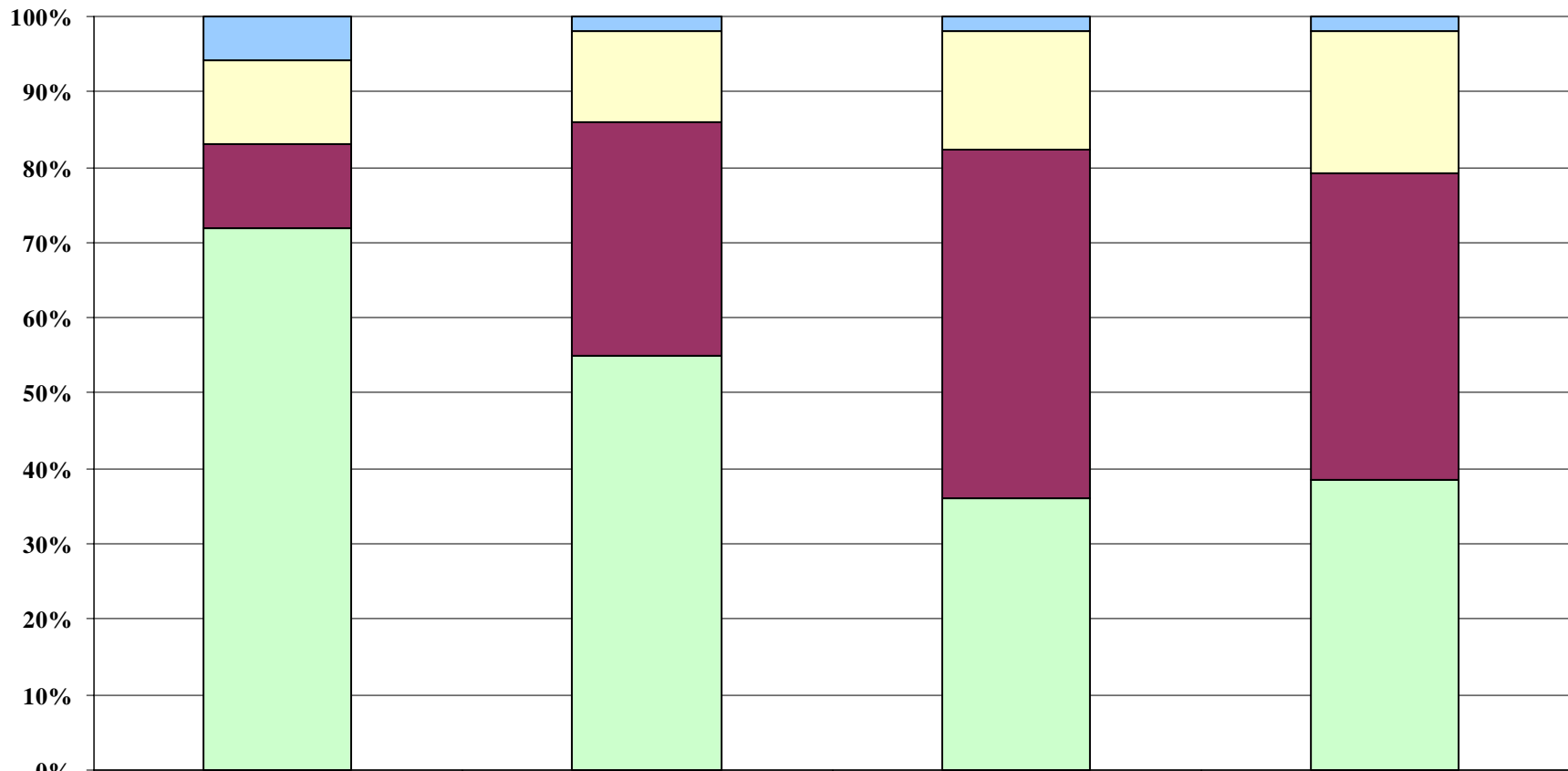
- On the standard Risk/Needs assessment instrument:
  - 57% of felons and 48% of misdemeanants score as medium or maximum risk.
  - 38% of felons and 28% of misdemeanants score as medium or maximum needs.
- The highest needs area among felons is financial management, followed by other-drug usage and alcohol usage. Among misdemeanants, alcohol usage is the highest needs area, followed by financial management and other-drug usage.
- The primary needs chart shows the percentage of probationers scoring maximum in each needs area. Probationers, who show a need in any area but who do not score the maximum possible, are not included in these counts.

### Race/Ethnicity of Texas Correctional Populations



	General Adult Population	Direct Community Supervision	Community Supervision Revocations	Incarcerated--State Jail	Incarcerated--ID	Released to Parole
Other	3%	2%	1%	1%	0.4%	0.2%
Hispanic	29%	36%	26%	21%	26%	22%
Black	11%	20%	31%	47%	42%	48%
White	57%	43%	42%	31%	31%	30%

### Race/Ethnicity of United States Correctional Populations



	General Adult Population	On Probation	Incarcerated (Prison)	On Parole
Other	6%	2%	2%	2%
Hispanic	11%	12%	16%	19%
Black	11%	31%	46%	41%
White	72%	55%	36%	39%

## Statewide Population: Race/Ethnicity

---

- Minorities are overrepresented at all stages of the criminal justice system. This phenomenon is evident both in Texas and nationally.
- The racial disparity increases as one moves through the system. While Whites make up 57% of the Texas general adult population, they account for only 43% of the probation population and less than one-third of the incarcerated population.
- Blacks, who account for only 11% of the Texas general adult population, make up 20% of the probation population and 43% of the incarcerated population (ID & State Jail).
- Hispanics account for a lower percentage of the incarcerated population (26%), than in either the probation (36%) or the general adult (29%) populations.

## Ten Largest CSCDs: August 2002 Direct, Indirect, or Pretrial Supervision Populations\*

CSCD	% of Statewide		% of Statewide		Total	% of Statewide Total**	Felons Rank***	Misd Rank***	Overall Rank***
	Felons	Felons Total**	Misd	Misd Total**					
1 Dallas	31,236	11.4%	24,619	11.4%	55,855	11.4%	1	1	1
2 Harris	28,143	10.2%	14,896	6.9%	43,039	8.8%	2	2	2
3 Bexar	14,300	5.2%	14,050	6.5%	28,350	5.8%	3	3	3
4 Travis	11,882	4.3%	12,331	5.7%	24,213	4.9%	6	4	4
5 Tarrant	12,252	4.5%	10,822	5.0%	23,074	4.7%	5	5	5
6 El Paso	13,308	4.8%	7,594	3.5%	20,902	4.3%	4	6	6
7 Hidalgo	11,460	4.2%	5,805	2.7%	17,265	3.5%	7	7	7
8 Cameron	6,444	2.3%	3,877	1.8%	10,321	2.1%	8	12	8
9 Denton	2,790	1.0%	5,781	2.7%	8,571	1.7%	20	8	9
10 Collin	3,205	1.2%	4,971	2.3%	8,176	1.7%	16	9	10
Top 10 Total	135,020	49.1%	104,746	48.4%	239,766	48.8%			
State of Texas****	242,776		195,429		438,205				

\*CSCD populations exclude transfers within a CSCD for an unduplicated CSCD count.

\*\*Percentages based on the sum of CSCD populations, which exclude transfers within a CSCD.

\*\*\*Rank values are based upon comparison to all 121 CSCDs.

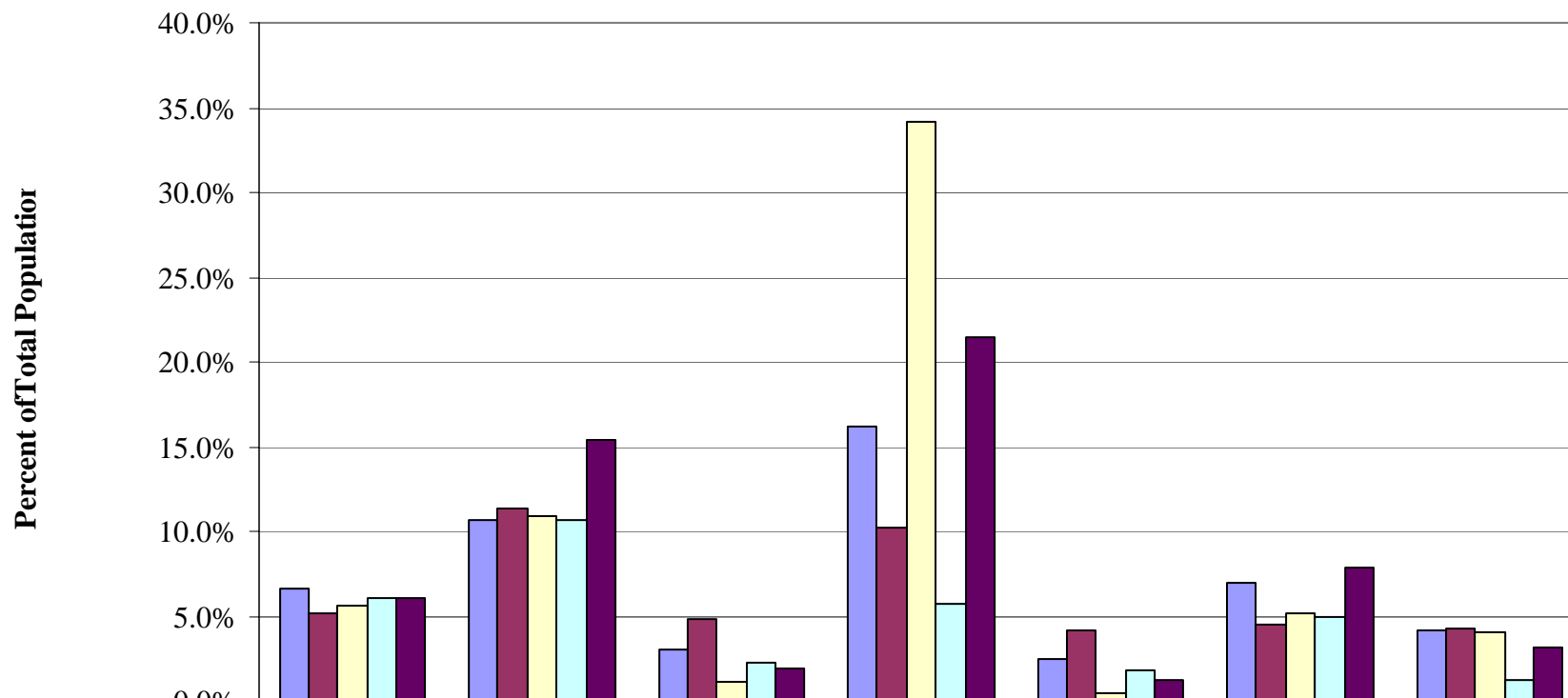
\*\*\*\*The State of Texas population average excludes all intrastate transfers for an unduplicated statewide count.

## Ten Largest CSCDs: August 2002 Direct, Indirect, or Pretrial Supervision Populations\*

---

- The 10 largest CSCDs account for almost half of the community supervision population in Texas.
- Although Dallas County has the largest overall community supervision population, Harris County *directly* supervises the largest number of offenders on community supervision.

### Percent of Adult and Felony Populations by County of Conviction



	Bexar	Dallas	El Paso*	Harris	Hidalgo	Tarrant	Travis
General Population	6.7%	10.7%	3.1%	16.1%	2.5%	6.9%	4.1%
Probation	5.2%	11.4%	4.8%	10.2%	4.2%	4.5%	4.3%
State Jail	5.6%	10.9%	1.1%	34.2%	0.4%	5.2%	4.0%
SAFPF	6.1%	10.7%	2.2%	5.7%	1.8%	4.9%	1.2%
TDCJ-ID	6.1%	15.4%	1.9%	21.5%	1.2%	7.9%	3.1%

\*El Paso percentages include El Paso County only.

# Felony Populations by County of Conviction

---

- El Paso and Hidalgo Counties sentence a larger percentage of offenders to probation than each county's percentage of the general adult population.
- In contrast, Harris County sentences a much lower percentage of offenders to probation and a much higher percentage to TDCJ (both ID and State Jail) than its percentage of the general adult population.
- Substance Abuse Felony Punishment Facilities (SAFPFs), providers of intensive substance abuse treatment to probationers and parolees, have relatively less use in both Harris and Travis Counties.

## Ten Largest CSCDs:

# FY 2002 Revocations

Size Rank	CSCD	Felons Revoked to TDCJ-ID & State Jail			Felons Revoked to TDCJ-ID		
		% of CSCD Population*	# of Revocations	% of Total Revocations	% of CSCD Population*	# of Revocations	% of Total Revocations
1	Dallas	10.4%	3,330	15.6%	5.2%	1,661	14.3%
2	Harris	13.7%	3,897	18.2%	6.0%	1,702	14.7%
3	Bexar	3.9%	563	2.6%	2.2%	322	2.8%
4	Travis	6.5%	720	3.4%	3.9%	429	3.7%
5	Tarrant	11.6%	1,416	6.6%	6.6%	799	6.9%
6	El Paso	3.3%	420	2.0%	2.3%	296	2.6%
7	Hidalgo	3.4%	391	1.8%	2.8%	320	2.8%
8	Cameron	4.2%	267	1.2%	2.6%	163	1.4%
9	Denton	10.9%	301	1.4%	9.1%	251	2.2%
10	Collin	5.2%	181	0.8%	2.2%	78	0.7%
Top 10 Total			11,486	53.8%		6,021	52.0%
State of Texas		<b>8.9%</b>	<b>21,369</b>		<b>4.8%</b>	<b>11,575</b>	
Size Rank	CSCD	Felons Revoked to TDCJ-State Jail			Misdemeanants Revoked to County Jail		
		% of CSCD Population*	# of Revocations	% of Total Revocations	% of CSCD Population*	# of Revocations	% of Total Revocations
1	Dallas	5.2%	1,669	17.0%	10.5%	2,550	10.0%
2	Harris	7.7%	2,195	22.4%	16.8%	2,596	10.1%
3	Bexar	1.7%	241	2.5%	20.0%	2,920	11.4%
4	Travis	2.6%	291	3.0%	5.7%	654	2.6%
5	Tarrant	5.1%	617	6.3%	15.9%	1,643	6.4%
6	El Paso	1.0%	124	1.3%	7.4%	466	1.8%
7	Hidalgo	0.6%	71	0.7%	1.3%	77	0.3%
8	Cameron	1.6%	104	1.1%	6.9%	261	1.0%
9	Denton	1.8%	50	0.5%	13.6%	783	3.1%
10	Collin	3.0%	103	1.1%	5.0%	245	1.0%
Top 10 Total			5,465	55.8%	0	12,195	47.7%
State of Texas		<b>4.1%</b>	<b>9,794</b>		<b>13.4%</b>	<b>25,580</b>	

\*The percent of CSCD population column represents revocations as a percentage of each CSCD's direct and indirect population.

# FY 2002 Revocations

## In Descending Felony Revocation Order

Size Rank	CSCD	TDCJ-ID & St. Jail Revocations		TDCJ-ID Revocations		TDCJ-State Jail Revocations		Misd. Revoked to County Jail	
		# of Revocations	% of Total Revocations	# of Revocations	% of Total Revocations	# of Revocations	% of Total Revocations	# of Revocations	% of Total Revocations
2	Harris	3,897	18.2%	1,702	14.7%	2,195	22.4%	2,596	10.1%
1	Dallas	3,330	15.6%	1,661	14.3%	1,669	17.0%	2,550	10.0%
5	Tarrant	1,416	6.6%	799	6.9%	617	6.3%	1,643	6.4%
4	Travis	720	3.4%	429	3.7%	291	3.0%	654	2.6%
3	Bexar	563	2.6%	322	2.8%	241	2.5%	2,920	11.4%
11	Lubbock	433	2.0%	247	2.1%	186	1.9%	358	1.4%
6	El Paso	420	2.0%	296	2.6%	124	1.3%	466	1.8%
16	Jefferson	413	1.9%	200	1.7%	213	2.2%	163	0.6%
7	Hidalgo	391	1.8%	320	2.8%	71	0.7%	77	0.3%
21	Potter	349	1.6%	167	1.4%	182	1.9%	259	1.0%
9	Denton	301	1.4%	251	2.2%	50	0.5%	783	3.1%
12	Nueces	295	1.4%	163	1.4%	132	1.3%	352	1.4%
15	Bell	288	1.3%	167	1.4%	121	1.2%	174	0.7%
20	Smith	288	1.3%	175	1.5%	113	1.2%	694	2.7%
18	Galveston	281	1.3%	133	1.1%	148	1.5%	219	0.9%
8	Cameron	267	1.2%	163	1.4%	104	1.1%	261	1.0%
25	Brazoria	212	1.0%	155	1.3%	57	0.6%	259	1.0%
38	Midland	210	1.0%	115	1.0%	95	1.0%	213	0.8%
17	Montgomery	210	1.0%	137	1.2%	73	0.7%	435	1.7%
13	Caldwell	209	1.0%	118	1.0%	91	0.9%	491	1.9%
Top 20 Total		14,493	67.8%	7,720	66.7%	6,773	69.2%	15,567	60.9%
State of Texas		<b>21,369</b>		<b>11,575</b>		<b>9,794</b>		<b>25,580</b>	

## FY 2002 Revocations

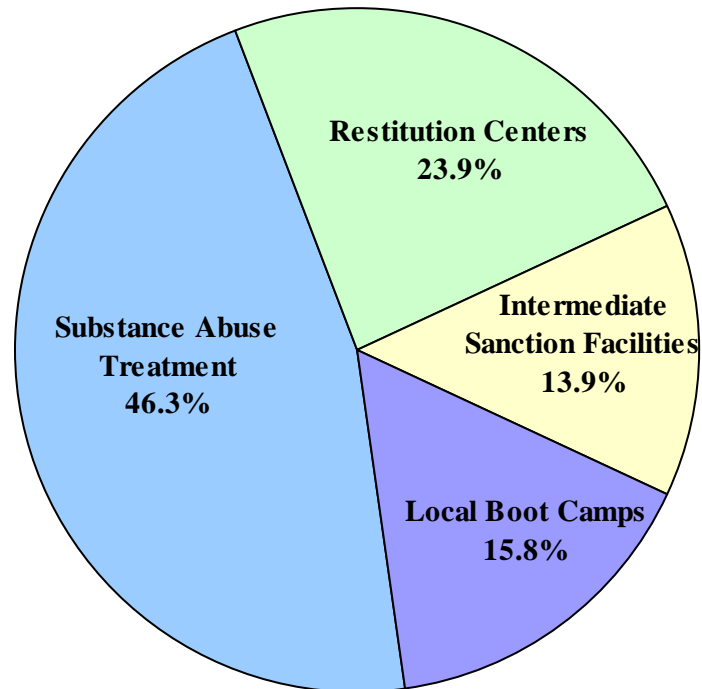
---

- The 10 largest CSCDs account for more than half of all felony revocations to TDCJ (ID and State Jail).
- Harris, Dallas, and Tarrant Counties combine to account for 40% of all felony revocations to TDCJ (ID and State Jail).
- These three counties account for only 27% of the state's felony population (Direct and Indirect).
- The 8 border CSCDs\* tend to have low felony revocation rates. These CSCDs make up 14% of the state's felony population (Direct and Indirect) but only 6% of the felony revocations to TDCJ (ID and State Jail).

\*El Paso, Hidalgo, Cameron, Webb, Starr, Pecos, Maverick, and Val Verde CSCDs

## Residential Facility Capacity as of August 31, 2002

Facility Type	Capacity as of August 31, 2002			Percent of Total Beds
	Male Beds	Female Beds	Total	
Substance Abuse Treatment	1,181	223	1,404	46.3%
Substance Abuse Treatment Facilities	445	145	590	19.5%
Court Residential Treatment Centers	451	20	471	15.5%
RSAT Facilities	237	58	295	9.7%
Treatment Alternative to Incarceration Program	48	-	48	1.6%
Restitution Centers	640	84	724	23.9%
Intermediate Sanction Facilities	412	10	422	13.9%
Local Boot Camps	442	38	480	15.8%
<b>Total Beds</b>	<b>2,675</b>	<b>355</b>	<b>3,030</b>	<b>100.0%</b>

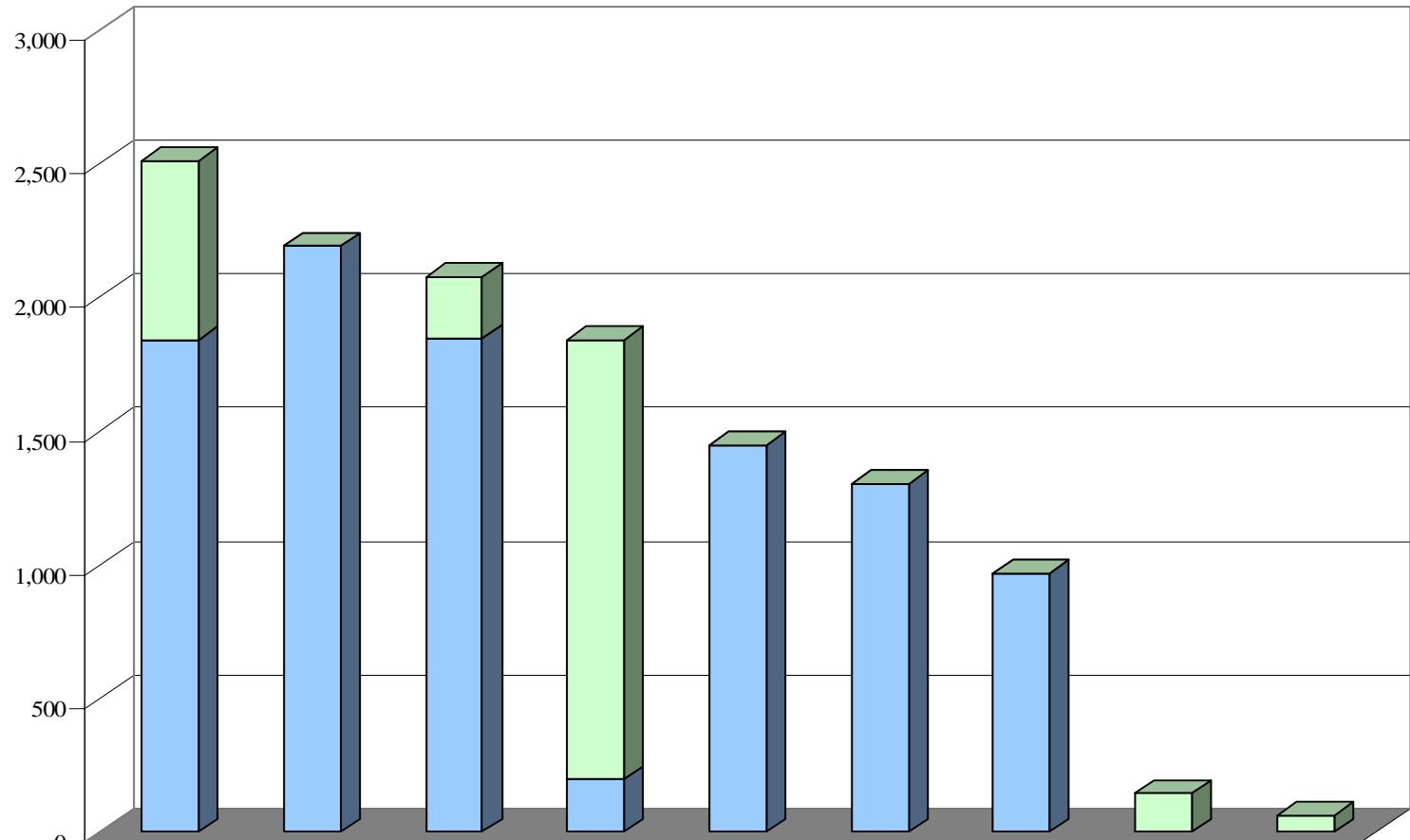


# Residential Facility Capacity as of August 31, 2002

---

- At the end of Fiscal Year 2002, there were 3,030 Community Corrections Facility (CCF) beds located in 36 facilities.
- Almost half of all CCF beds are devoted to substance abuse treatment.
- Only 11% of CCF beds are designated for females, although females represent 25% of the community supervision population.

## FY 2002 Residential Population Total Served



	Substance Abuse Treatment	Restitution Centers	Intermediate Sanction Facilities	Treatment Alternative to Incarceration	Local Boot Camps	Court Residential Treatment	RSAT Facilities	Halfway Houses	Facilities for Offenders w/ Mental Imp.
Contracted Residential Services*	668	-	228	1,642	-	-	-	145	65
Non-contracted (CCF)	1,840	2,192	1,850	198	1,446	1,304	967	-	-

\*Contracted Residential Services are residential services that are contracted for on a fixed cost per bed, per day basis.

# FY 2002 Residential Population: Total Served ---

- Treatment for substance abuse was the most common type of residential service provided. The TAIP / RSAT program, SATFs\* and CRTCs\*\* are primary providers of residential substance abuse treatment services. Together, these facilities provided residential substance abuse treatment to 6,619 offenders. This equates to 53% of all offenders receiving residential services in CSCD-operated or contracted facilities.

*\*Substance Abuse Treatment Facility (SATF)*

*\*\*Court Residential Treatment Center (CRTC)*

## Community Supervision Officers: ---

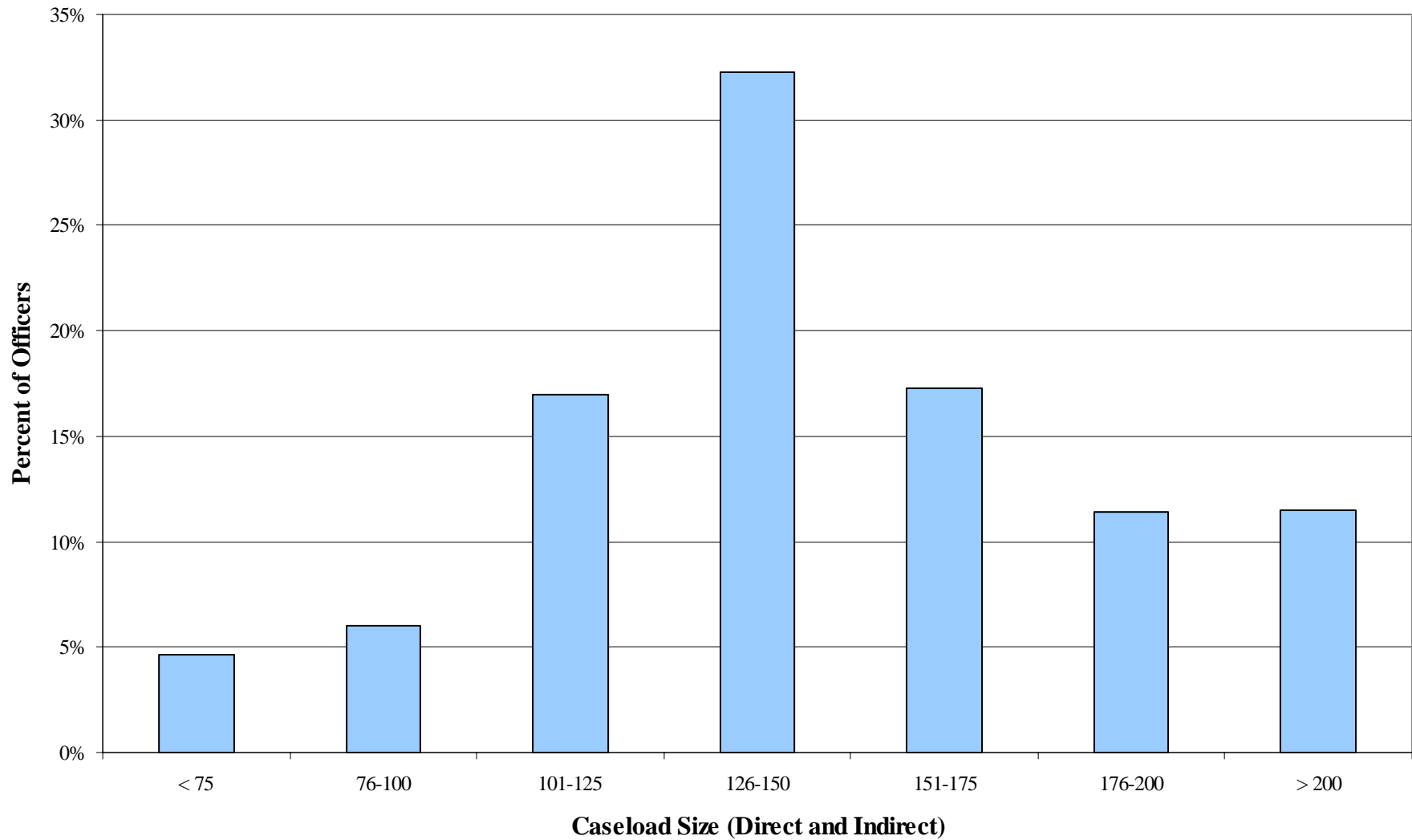
- In August 2002, there were 3,399 community supervision officers\* employed across the state.
- The average CSO\*\* in Texas has six years of experience and earns about \$33,000 annually.
  - One-third of officers have three or fewer years of experience. These officers earn about \$28,000 annually.
- In FY 2001, the statewide turnover rate for CSOs was 16.7%.
  - Half of currently employed CSOs\*\*\* stated that they do not expect to be in community supervision in three years.
  - Sixty-six percent of those CSOs expecting to leave cited “Pay and Benefits” as the primary reason.

*\*Includes all certified community supervision officers who were carrying at least one direct case on the last day of the month.*

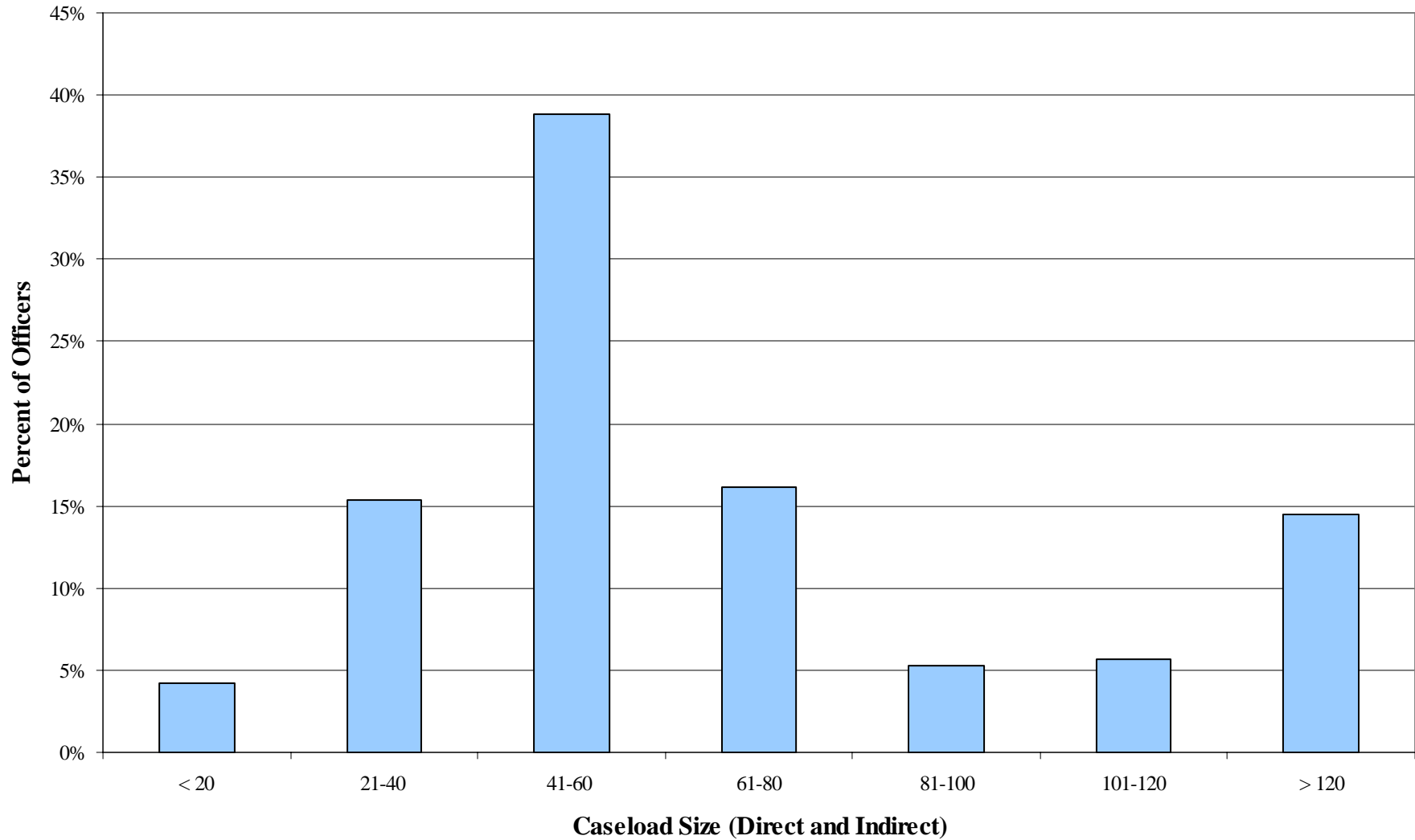
*\*\*Tenure and salary data reported are medians for those officers who were reported as CSOs in the January 2002 CSCD Salary, Tenure, and Turnover Survey.*

*\*\*\* Based on responses from 335 community supervision officers in Texas surveyed in February 2002..*

### Caseload Size: Regular Caseloads



### Caseload Size: Specialized Caseloads





**August 2002 Direct CSCD Offender Population**

CSCD	Felons	% of Statewide Felon Total	Misdemeanants	% of Statewide Misd. Total	Total	% of Statewide Total
Anderson	612	0.39%	447	0.40%	1,059	0.39%
Andrews	127	0.08%	82	0.07%	209	0.08%
Angelina	863	0.54%	493	0.44%	1,356	0.50%
Bailey	109	0.07%	101	0.09%	210	0.08%
Bastrop	1,097	0.69%	792	0.71%	1,889	0.70%
Baylor	80	0.05%	54	0.05%	134	0.05%
Bell	2,119	1.34%	901	0.80%	3,020	1.12%
Bexar	10,279	6.49%	8,661	7.71%	18,940	6.99%
Bowie	956	0.60%	693	0.62%	1,649	0.61%
Brazoria	1,737	1.10%	1,315	1.17%	3,052	1.13%
Brazos	1,120	0.71%	1,000	0.89%	2,120	0.78%
Brown	444	0.28%	281	0.25%	725	0.27%
Burnet	506	0.32%	294	0.26%	800	0.30%
Caldwell	1,598	1.01%	1,859	1.66%	3,457	1.28%
Cameron	3,497	2.21%	1,890	1.68%	5,387	1.99%
Cass	300	0.19%	220	0.20%	520	0.19%
Cherokee	438	0.28%	259	0.23%	697	0.26%
Childress	172	0.11%	149	0.13%	321	0.12%
Collin	1,704	1.08%	2,022	1.80%	3,726	1.38%
Comanche	292	0.18%	179	0.16%	471	0.17%
Cooke	218	0.14%	245	0.22%	463	0.17%
Coryell	316	0.20%	234	0.21%	550	0.20%
Crane	45	0.03%	30	0.03%	75	0.03%
Crockett	81	0.05%	46	0.04%	127	0.05%
Dallas	18,565	11.71%	12,892	11.48%	31,457	11.62%
Dawson	343	0.22%	283	0.25%	626	0.23%
Deaf Smith	277	0.17%	245	0.22%	522	0.19%
Denton	1,590	1.00%	2,871	2.56%	4,461	1.65%
Eastland	144	0.09%	91	0.08%	235	0.09%
Ector	968	0.61%	567	0.50%	1,535	0.57%
El Paso	5,938	3.75%	3,921	3.49%	9,859	3.64%
Ellis	690	0.44%	482	0.43%	1,172	0.43%
Erath	221	0.14%	125	0.11%	346	0.13%
Falls	356	0.22%	203	0.18%	559	0.21%
Fannin	394	0.25%	191	0.17%	585	0.22%
Fayette	486	0.31%	327	0.29%	813	0.30%
Floyd	95	0.06%	81	0.07%	176	0.06%
Fort Bend	1,456	0.92%	1,438	1.28%	2,894	1.07%
Galveston	1,933	1.22%	1,244	1.11%	3,177	1.17%
Gray	109	0.07%	110	0.10%	219	0.08%
Grayson	888	0.56%	605	0.54%	1,493	0.55%
Gregg	856	0.54%	1,103	0.98%	1,959	0.72%
Guadalupe	526	0.33%	457	0.41%	983	0.36%
Hale	519	0.33%	501	0.45%	1,020	0.38%
Hardin	327	0.21%	453	0.40%	780	0.29%
Harris	22,534	14.22%	11,590	10.32%	34,124	12.60%
Harrison	305	0.19%	439	0.39%	744	0.27%
Haskell	64	0.04%	51	0.05%	115	0.04%
Henderson	524	0.33%	289	0.26%	813	0.30%

**August 2002 Direct CSCD Offender Population**

CSCD	Felons	% of Statewide Felon Total	Misdemeanants	% of Statewide Misd. Total	Total	% of Statewide Total
Hidalgo	6,259	3.95%	4,067	3.62%	10,326	3.81%
Hill	271	0.17%	287	0.26%	558	0.21%
Hockley	253	0.16%	209	0.19%	462	0.17%
Hood	411	0.26%	464	0.41%	875	0.32%
Hopkins	465	0.29%	312	0.28%	777	0.29%
Howard	274	0.17%	241	0.21%	515	0.19%
Hunt	552	0.35%	152	0.14%	704	0.26%
Hutchinson	215	0.14%	183	0.16%	398	0.15%
Jack	326	0.21%	480	0.43%	806	0.30%
Jasper	540	0.34%	517	0.46%	1,057	0.39%
Jefferson	2,615	1.65%	847	0.75%	3,462	1.28%
Jim Wells	440	0.28%	324	0.29%	764	0.28%
Johnson	1,049	0.66%	512	0.46%	1,561	0.58%
Jones	125	0.08%	132	0.12%	257	0.09%
Karnes	884	0.56%	472	0.42%	1,356	0.50%
Kaufman	560	0.35%	260	0.23%	820	0.30%
Kerr	793	0.50%	1,006	0.90%	1,799	0.66%
Kleberg	334	0.21%	283	0.25%	617	0.23%
Lamar	581	0.37%	503	0.45%	1,084	0.40%
Lamb	182	0.11%	136	0.12%	318	0.12%
Lavaca	510	0.32%	306	0.27%	816	0.30%
Liberty	727	0.46%	599	0.53%	1,326	0.49%
Limestone	424	0.27%	325	0.29%	749	0.28%
Lubbock	3,095	1.95%	2,118	1.89%	5,213	1.93%
Matagorda	760	0.48%	668	0.59%	1,428	0.53%
Maverick	240	0.15%	51	0.05%	291	0.11%
McCulloch	176	0.11%	164	0.15%	340	0.13%
McLennan	1,533	0.97%	2,087	1.86%	3,620	1.34%
Midland	1,181	0.75%	666	0.59%	1,847	0.68%
Milam	181	0.11%	192	0.17%	373	0.14%
Montague	303	0.19%	193	0.17%	496	0.18%
Montgomery	1,449	0.91%	1,393	1.24%	2,842	1.05%
Moore	241	0.15%	185	0.16%	426	0.16%
Morris	392	0.25%	404	0.36%	796	0.29%
Nacogdoches	466	0.29%	327	0.29%	793	0.29%
Navarro	532	0.34%	572	0.51%	1,104	0.41%
Nolan	252	0.16%	279	0.25%	531	0.20%
Nueces	3,056	1.93%	1,377	1.23%	4,433	1.64%
Orange	775	0.49%	274	0.24%	1,049	0.39%
Palo Pinto	272	0.17%	185	0.16%	457	0.17%
Panola	431	0.27%	265	0.24%	696	0.26%
Parker	528	0.33%	556	0.50%	1,084	0.40%
Pecos	253	0.16%	145	0.13%	398	0.15%
Polk	724	0.46%	383	0.34%	1,107	0.41%
Potter	2,339	1.48%	976	0.87%	3,315	1.22%
Reeves	165	0.10%	173	0.15%	338	0.12%
Rockwall	225	0.14%	437	0.39%	662	0.24%
Rusk	378	0.24%	199	0.18%	577	0.21%
San Patricio	886	0.56%	640	0.57%	1,526	0.56%

**August 2002 Direct CSCD Offender Population**

CSCD	Felons	% of Statewide Felon Total	Misdemeanants	% of Statewide Misd. Total	Total	% of Statewide Total
Scurry	194	0.12%	104	0.09%	298	0.11%
Smith	1,615	1.02%	1,113	0.99%	2,728	1.01%
Starr	714	0.45%	281	0.25%	995	0.37%
Tarrant	9,211	5.81%	6,600	5.88%	15,811	5.84%
Taylor	1,537	0.97%	935	0.83%	2,472	0.91%
Terry	247	0.16%	165	0.15%	412	0.15%
Tom Green	1,579	1.00%	935	0.83%	2,514	0.93%
Travis	6,738	4.25%	5,851	5.21%	12,589	4.65%
Tyler	209	0.13%	165	0.15%	374	0.14%
Upshur	480	0.30%	289	0.26%	769	0.28%
Uvalde	462	0.29%	373	0.33%	835	0.31%
Val Verde	205	0.13%	264	0.24%	469	0.17%
Van Zandt	298	0.19%	150	0.13%	448	0.17%
Victoria	1,346	0.85%	996	0.89%	2,342	0.86%
Walker	774	0.49%	507	0.45%	1,281	0.47%
Webb	1,305	0.82%	1,092	0.97%	2,397	0.89%
Wheeler	57	0.04%	68	0.06%	125	0.05%
Wichita	1,158	0.73%	191	0.17%	1,349	0.50%
Wilbarger	138	0.09%	120	0.11%	258	0.10%
Williamson	1,157	0.73%	1,311	1.17%	2,468	0.91%
Winkler	57	0.04%	23	0.02%	80	0.03%
Wood	365	0.23%	207	0.18%	572	0.21%
Young	202	0.13%	229	0.20%	431	0.16%
State of Texas	158,489	100.00%	112,301	100.00%	270,790	100.00%